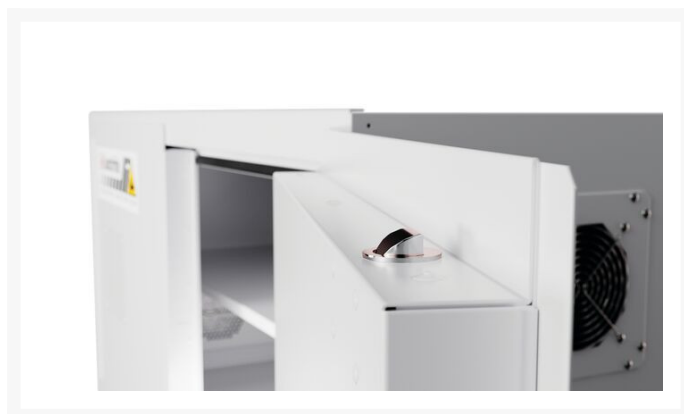
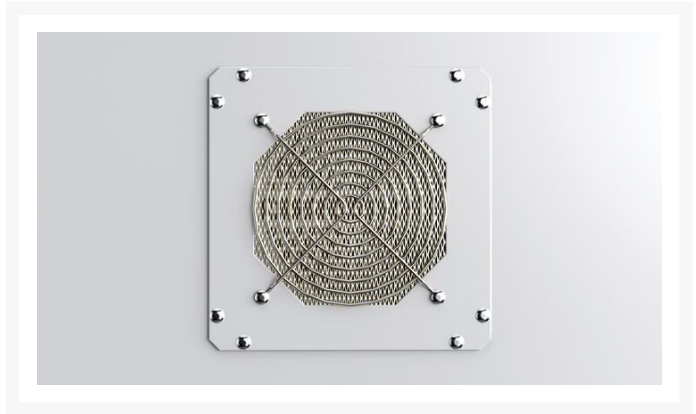
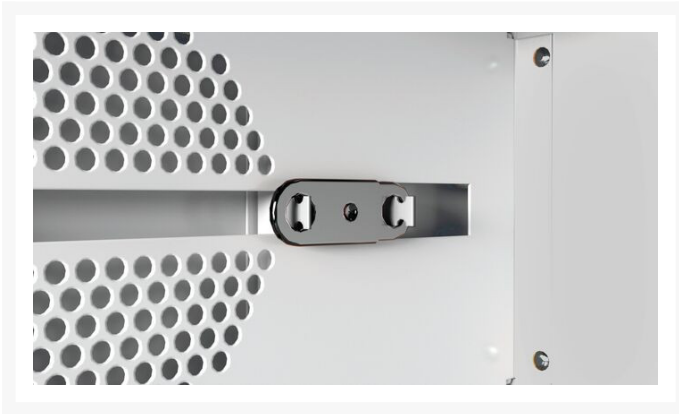




# Lithium-Ion Battery Charging Cabinet, 4kWh TECR, 2 Doors, Manual Close, Gray - 231703

## Product Images





## Short Description

- Ideal for charging and temporary storage of lithium-ion batteries
- 4kWh TECR maximum total capacity – includes 8-receptacle power strip
- Heat-reactive label changes colors when external temperatures reach 120° Fahrenheit
- Shelf capacity: 65 lbs of evenly distributed weight
- Cabinet Exterior Dimensions: 24-in H x 43-in W x18-in D

## Description

---

### Lithium-Ion Battery Charging Cabinet

Introducing Justrite's lithium-ion battery charging and storage cabinet, fortified with ChargeGuard™ for ultimate protection. This state-of-the-art cabinet features multiple layers of advanced shielding, specifically designed to reduce the risks of battery fires and thermal runaway.

This patent-pending design for our lithium-ion battery cabinet offers the highest level of protection. With eight receptacles, it allows for simultaneous charging of multiple batteries up to a maximum of 4kWh, providing a reliable and efficient solution. The lightweight, benchtop design allows users to conveniently relocate the cabinet with minimal effort, while lockable doors help control access to lithium-ion batteries while preventing opportunities for theft.

Rest assured that your people, property, and the environment are safeguarded when using Justrite's family of products. Trust Justrite's lithium-ion cabinet as a secure and comprehensive solution for combatting lithium-ion battery fires.

### Battery Storage Cabinet Construction

The Justrite battery cabinet is expertly crafted from sturdy 18-gauge (1 mm) steel, ensuring durability and security. Its exterior dimensions measure 24-in H x 43-in W x 18-in D. The design includes double-walled sides, top, and bottom, with a 1-1/2-inch (3.8 cm) air gap between the walls. The manual-close doors feature baffled vents with a unique flame arrester pattern, supported by continuous piano hinges. The cabinet also includes a grounding attachment, leveling feet, and a three-point stainless steel bullet latching system, ensuring a secure and reliable door closure while enhancing resistance to heat and corrosion. The flush-mounted door handle comes with a key lock for added security.

Inside the cabinet, you'll find a fixed shelf with a safe load capacity of 65 lbs. One Axial fan helps to regulate temperature and features sliding doors that close and obstruct the fan opening if the internal temperature exceeds 135° Fahrenheit. Additionally, the cabinet is equipped with an 8-receptacle power strip, providing you with a controlled space for charging your lithium-ion batteries.

**Required Utilities:** This product is intended to be plugged into a dedicated 120VAC/60Hz GFCI supply using a minimum 14 gauge cord. (Supply cord not included with cabinet)

## Specifications

---

Model No	231703
UPC	697841272095
Brand	Justrite
International Model No.	231703
Color	Gray
Material Specifications	18-Gauge CR Steel
Number of Doors	2
Door Type	Manual Close
Number of Shelves	1
Adjustable Shelves	No
Dimensions, Exterior	43"W x 18"D x 24"H
Dimensions, Exterior	1092mm x 457mm x 610mm
Dimensions, Interior	39.5"W x 14.562"D x 19.5"H
Dimensions, Interior	1003mm x 370mm x 495mm
Height (Inches)	24
Width (Inches)	43
Depth	18
Net Weight, lbs	157
Net Weight, kg	58.5