

STANDARD FEATURES

- A** Variable-height collar™
- B** Full-motion no-seam™ shoulder
- C** Retractable action back
- D** DuraHem™ sleeve and leg hems
- E** Angled-cuff sleeve and hem
- F** Offset seam design
- G** Low-rise pant & adjustable belt (see p.4)
- H** Enhanced-mobility knee™ (EMK™)
- I** No-gap™ throat flap
- J** Complete-motion crotch™
- K** No-bulk™ pant closure (not shown)
- L** Seams with reflective piping
- M** Easy-to-grip padded pull tabs

PRECONFIGURED OPTIONS

- 1** Black Nomex® wristlet with thumb hole
- 2** Left chest: 8" x 4" x 2" radio pocket with mic loop
- 3** Right chest: flashlight holder & clip with hook & loop fastener
- 4** Two 8" x 9" semi-bellows coat pockets
- 5** Micro-perforated trim 3" (lime/yellow & grey) - New York pattern*
- 6** Two 10" x 10" bellows pant pockets
- 7** 7.5" x 8" inside left pocket and 1" x 3" hook & loop attachment (not shown)
- 8** Deluxe heavy-duty removable H-back cotton suspenders with padding (not shown)

*The trim on the image differs from the actual product.



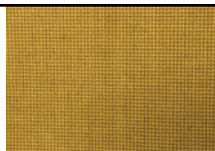
OUTER SHELL

PBI Max™ 7.0 - Dual Color: Gold & Black

Twill weave, Teflon F-PPE finish

Content: PBI®/Kevlar® spun yarn with Kevlar® filament

Weight: 7.0 oz./yd²



MOISTURE BARRIER

CROSSTECH® BLACK 2F

Substrate: Nomex® IIIA woven

Film: Bi-component ePTFE membrane

Total weight: 4.7 oz./yd²



THERMAL LINER

GLIDE ICE™ 2-LAYER

Face cloth: 60% Nomex® filament / 40% Nomex® Lenzing FR® spun yarn twill weave

Battings: 2 layers Nomex® spunlace: 2.3 oz./yd² + 1.5 oz./yd²

Total weight: 7.4 oz./yd²



Additional options available on request (\$)

TPP38.9 THL277.7
NFPA 1971-2018 Certified