

### STANDARD FEATURES

- A** Variable-height collar™
- B** Full-motion no-seam™
- C** Retractable action back (see p.4)
- D** Durahem™ sleeve and leg hems
- E** Angled-cuff sleeve and hem
- F** Offset seam design
- G** Low-rise pant & adjustable belt (see p.4)
- H** Enhanced-mobility knee™ (EMK™)
- I** No-gap™ throat flap
- J** Complete-motion crotch
- K** No-bulk™ pant closure (not shown)
- L** Seams with reflective piping
- M** Easy-to-grip padded pull tabs

### PRECONFIGURED OPTIONS

- 1** Black Nomex® wristlet with thumb hole
- 2** Left chest: 8" x 4" x 2" radio pocket with mic loop
- 3** Right chest: flashlight holder & clip with hook & loop fastener
- 4** Two 8" x 9" semi-bellows coat pockets
- 5** Micro-perforated trim 3" (lime/yellow & grey) - New York pattern\*
- 6** Two 10" x 10" bellows pant pockets
- 7** 7.5" x 8" inside left pocket and 1" x 3" hook & loop attachment (not shown)
- 8** Deluxe heavy-duty removable H-back cotton suspenders with padding (not shown)

\*The trim on the image differs from the actual product.



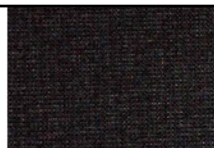
### OUTER SHELL

**ARMOR AP™ - Color: Black**

400-denier multi-filament twill weave with water-repellent finish

**Content:** Kevlar® / Nomex®

**Weight:** 6.5 oz/yd<sup>2</sup>



### MOISTURE BARRIER

**GORE-TEX CROSSTECH® Prime**

FR textiles laminated to a proprietary Gore film

**Total weight:** 4.6 oz/yd<sup>2</sup>



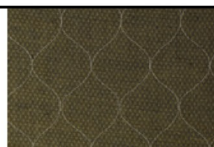
### THERMAL LINER

**PRISM™ 2-LAYER**

**Face cloth:** 68% aramid / 21% FR viscose / 11% polyamide Dobby weave

**Battling:** 1 layer of a 2.3 oz/yd<sup>2</sup> and 1 layer of 1.5 oz/yd<sup>2</sup> E89™ spunlace

**Total weight:** 7.4 oz/yd<sup>2</sup>



Additional options available on request (\$)

TPP35.3 THL234.1  
NFPA 1971-2018 Certified