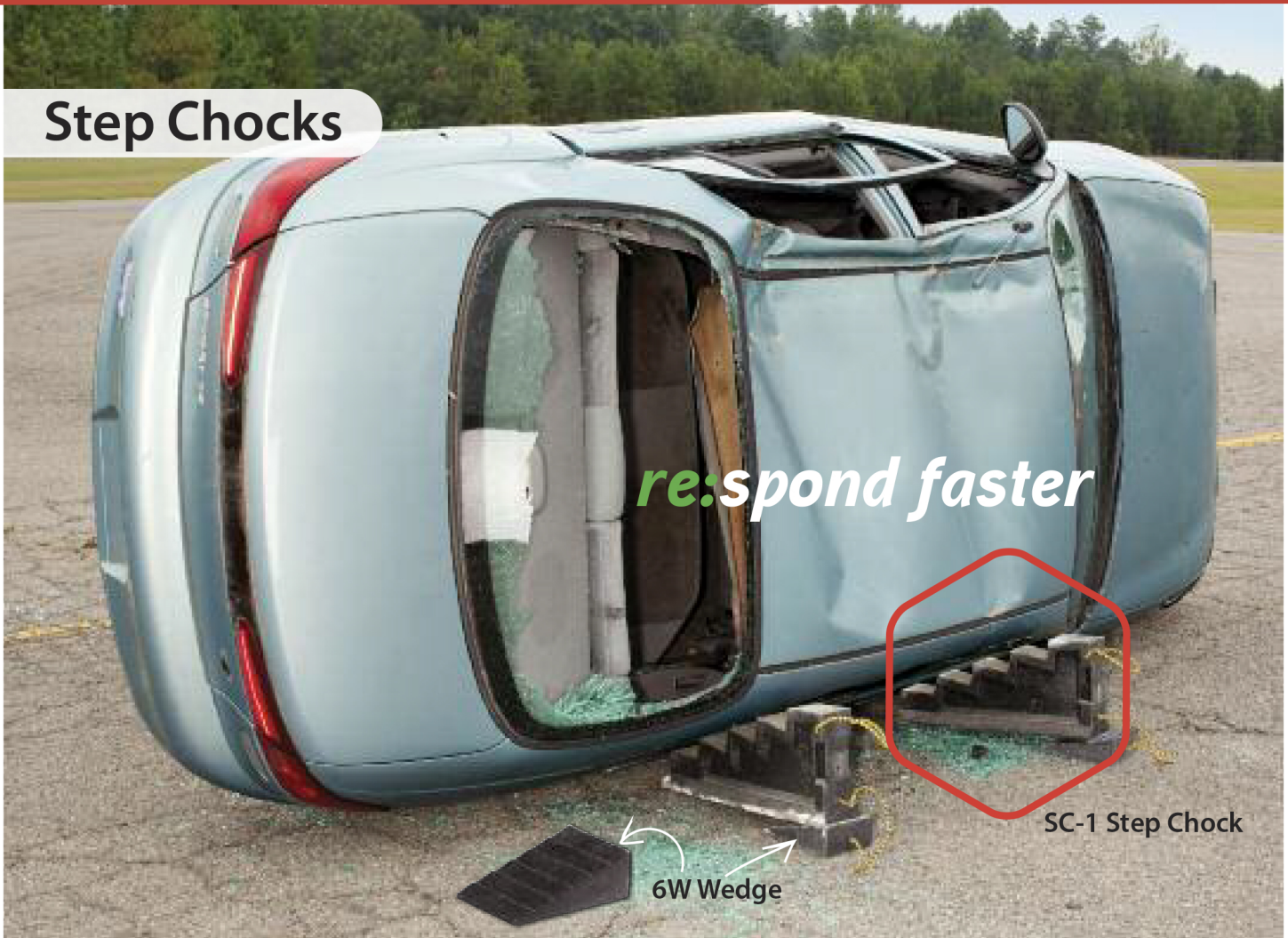
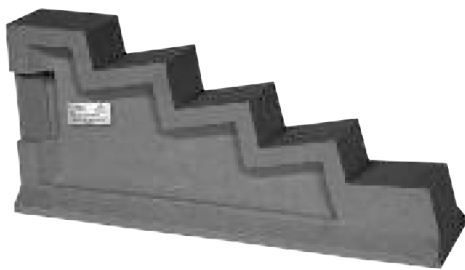


# Step Chocks



## step chocks

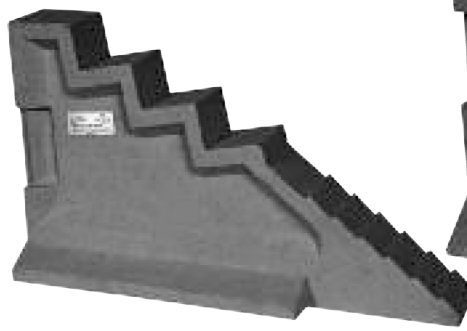
- Fastest way to stabilize.
- Ensures stability.
- Work faster against the golden hour.



### standard step chock

- Quickly stabilize passenger vehicles.
- Lightweight.
- Built-in hand hold.

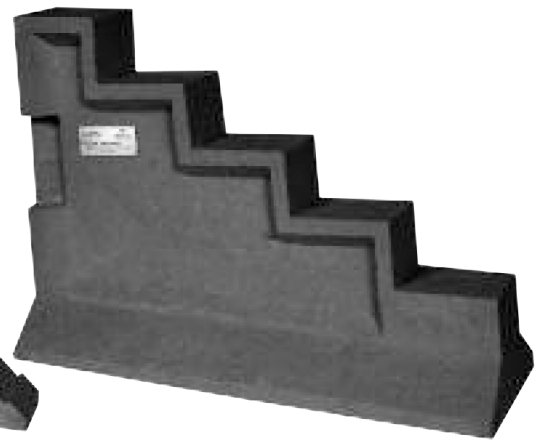
Part #	Base	Width	Hgt	Wgt
SC-1	24 <sup>1</sup> / <sub>2</sub> "x5 <sup>3</sup> / <sub>4</sub> "	3 <sup>3</sup> / <sub>4</sub> "	10 <sup>3</sup> / <sub>4</sub> "	7.71 kg./ 17 lbs.



### medium step chock

- Quickly stabilize trucks and SUV's.
- Stable footprint.
- Built-in hand hold.

Part #	Base	Width	Hgt	Wgt
SC-2	29 <sup>1</sup> / <sub>2</sub> "x9"	4 <sup>1</sup> / <sub>2</sub> "	17 <sup>1</sup> / <sub>4</sub> "	16.7 kg./ 37 lbs.



### giant truck/bus step chock

- Quickly stabilize large vehicles.
- Built-in hand hold.

Part #	Base	Width	Hgt	Wgt
SC-3	31 <sup>1</sup> / <sub>2</sub> "x11"	5"	22"	28.5 kg./ 63 lbs.